



CRAFTING STORIES
ONE TILE AT A TIME

Whispers of the Divine

Walls That Speak - Vol 1

*Handcrafted by father-daughter duo
P.K. Choudhary (Retd. IAS) & Rachana Choudhary, CA*



Bring a masterpiece to your wall

Each mural is a bespoke creation, thoughtfully designed to translate your vision into a striking, wall-sized work of art. Blending intricate craftsmanship with timeless storytelling, our murals elevate and redefine both living and workspaces.



Even at 87, he meticulously hand-shapes each tile, bending with quiet dedication to place every piece with precision and care. For him, art is not merely a pursuit it is a way of life that he lives and breathes. His artistic journey has spanned diverse forms, from wood carving to cement sculpture, each reflecting his enduring passion for craftsmanship. Now, as his daughter, **Rachana Choudhary** a Chartered Accountant joins him, the journey becomes even more meaningful: a shared passion and a deeply personal bond brought to life through art.

MEET THE HANDS BEHIND THE ART



THE HOUSE
OF KARIGAR

Divine Union

Anchored by a striking yellow tilak and bold red tika, the mural portrays Lakshmi and Shrihari on either side, their hands joined in quiet unity, evoking the sacred harmony of preservation and prosperity. It symbolizes divine grace, abundance, and enduring well-being.



LakshmiShrihari

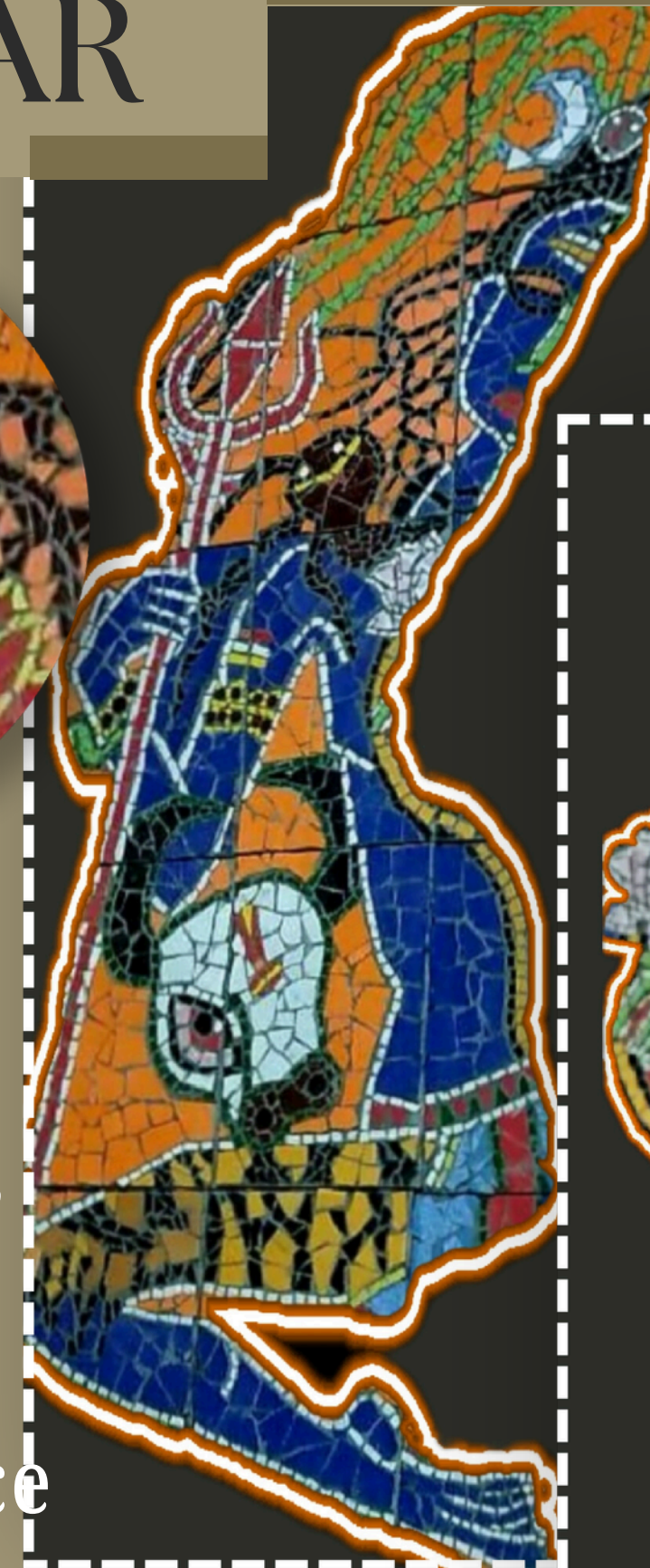
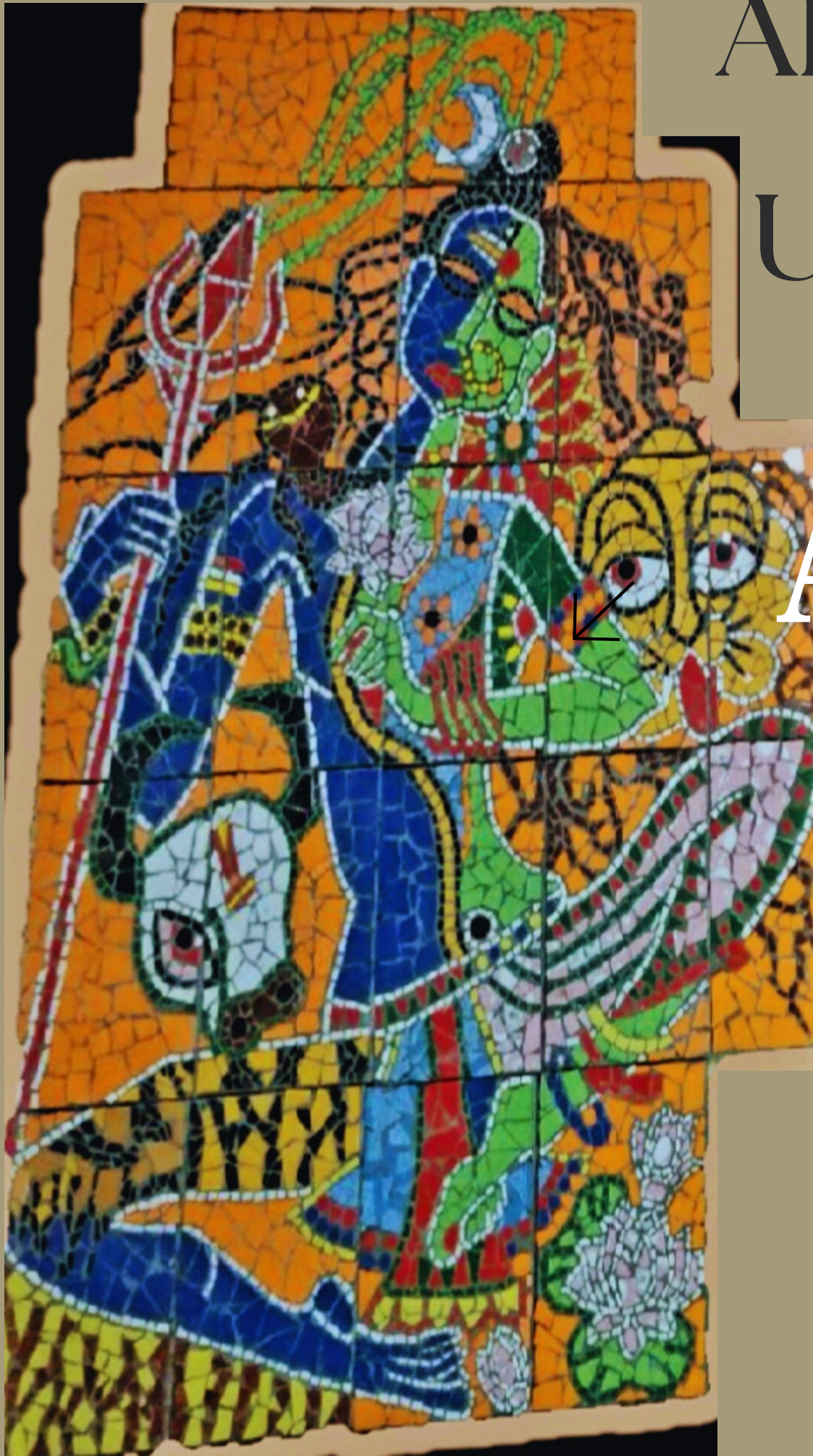


Approx: 5.5x5ft

ARDHANARISHWAR

Uma Mahesh

Ardhanarishwar-
an artistic portrayal of
Shakti, where Shiva's
power and cosmic mastery,
symbolized by the crescent,
serpent, and trishul,
seamlessly intertwine with
Shakti's jewel-adorned grace
and nurturing energy-
reflecting eternal
harmony and perfect balance.



7x 5 ft



Portraying the divine wedding of Siya–Ram, this mural captures the sacred fire as the eternal witness to their vows. The knot of Maa Sita’s chunari and Shri Ram’s uttariya-symbolising the sacred Gathbandhan- binds them in a timeless union of love and devotion.

AGNI SAKSHI

SiyaRam



'Jiy binu pran, nadi binu vari; taisi nath, purush binu nari.'



7.5ftx6.5ft

RadhaKeshav

Radha & Krishna on a swing, portraying love that is eternal, sacred, and beyond time.



6.5 x 5ft

Swing of Eternity



Maiyya Mori, Main Nahin Makhan Khayo

An evocative mural that tenderly captures pink-cheeked Bal Krishna—where playful mischief meets pure innocence and maternal tenderness. Echoing the heart-warming divine baal leela, the scene comes alive with childlike charm and a mother's everlasting, gentle bond.



Innocent
Denial

Approx 7.5x6.5 ft

RHYTHM OF VRINDAVAN



The mural portrays Lord Krishna amidst his gentle herd, its circular composition drawing the eye inward with a rhythmic sense of movement. Crafted through intricate fragments, it reflects a quiet harmony between the divine and nature.



Approx: 4x4 ft

Jai Shri Ram

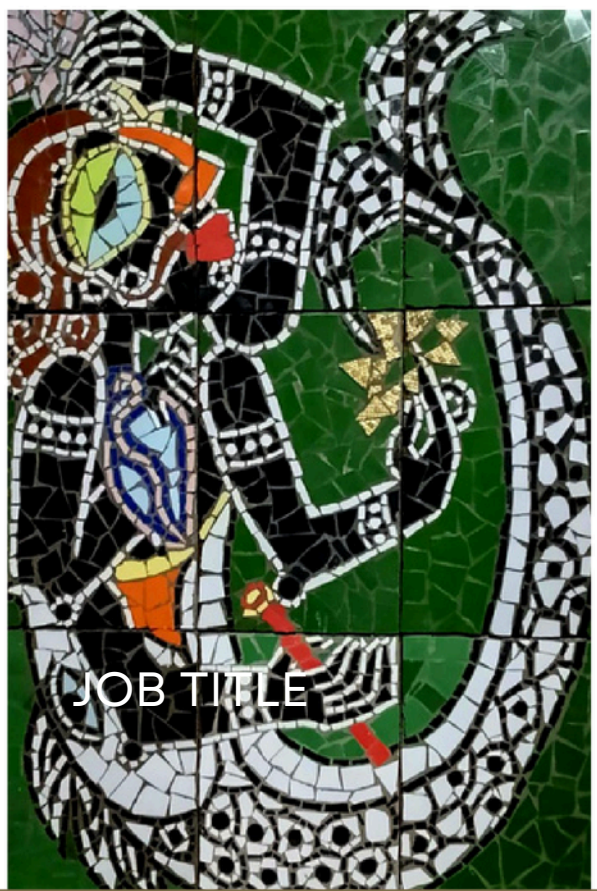


5.5x4 ft



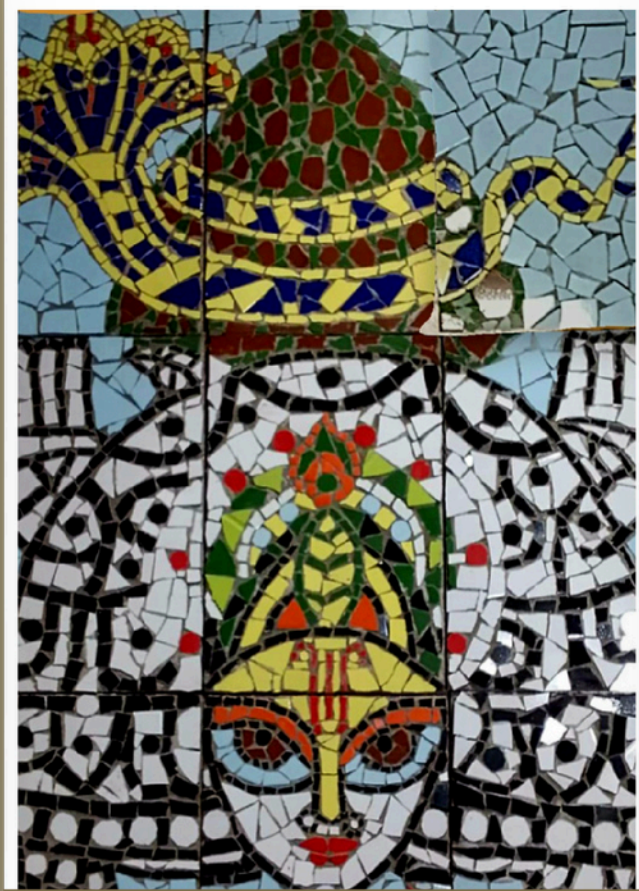
5.5x3 ft

Dashavatar



JOB TITLE

MATSYA
(THE FISH)

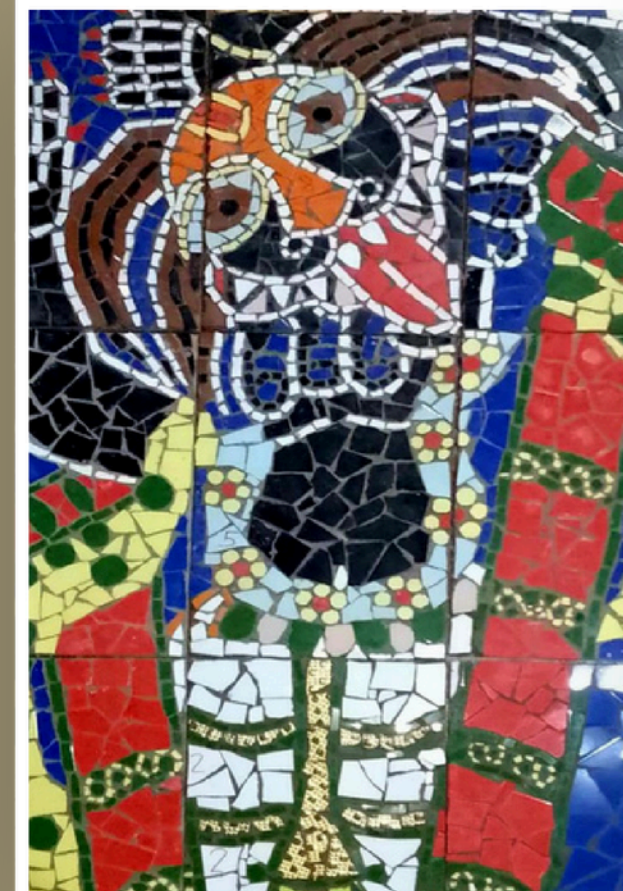


KAURMA
(THE TORTOISE)

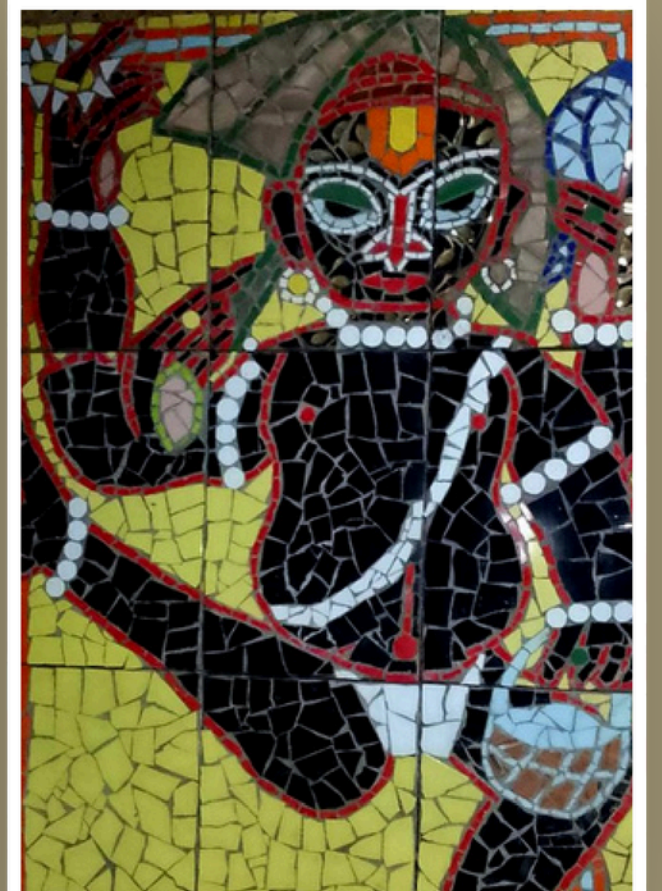


JOB TITLE

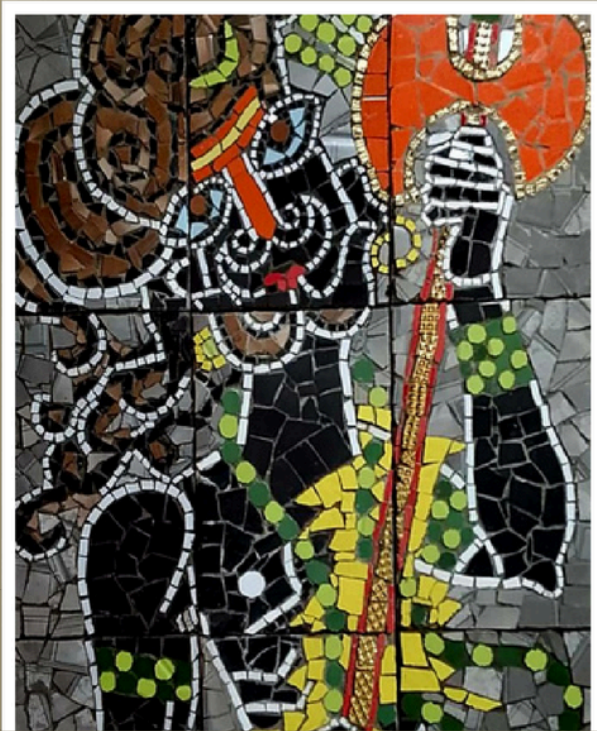
VARHAA
(THE BOAR)



NARASIMHA
(THE MAN-LION)



VAMANA
(THE DWARF)

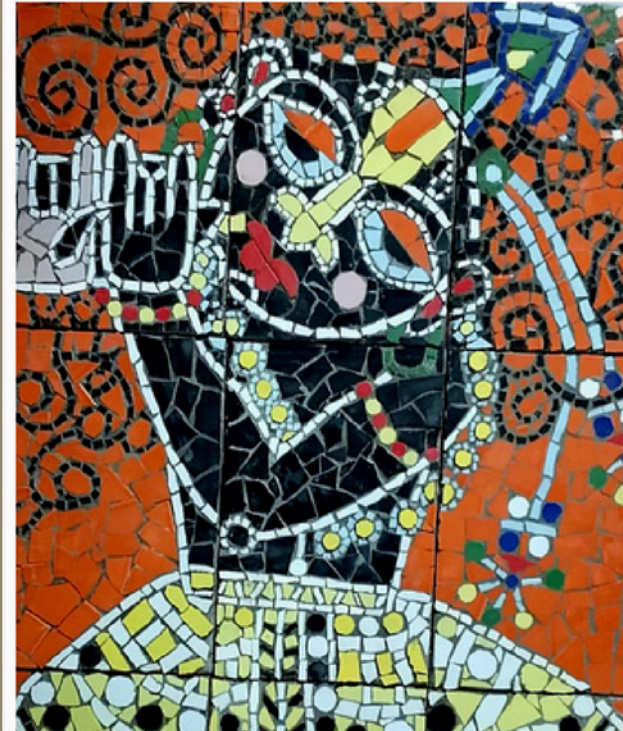


PARASHURAMA
(THE WARRIOR SAGE)

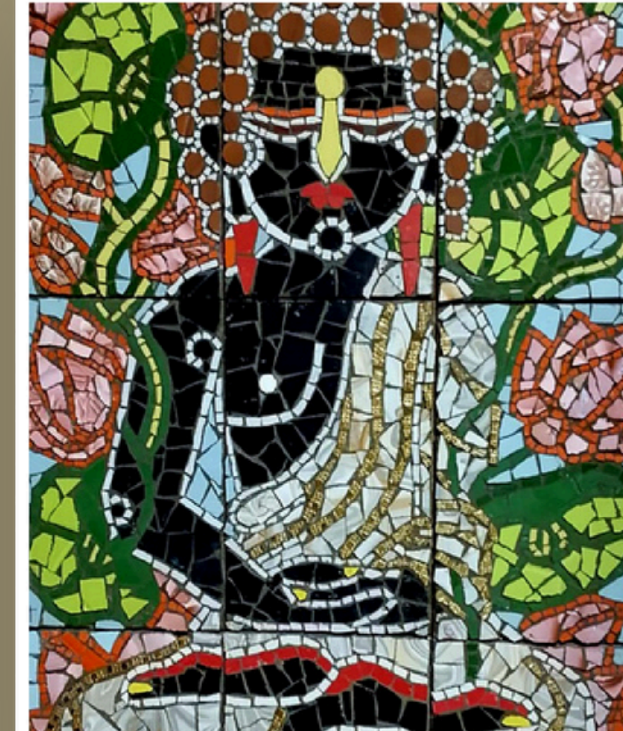


JOB TITLE

RAMA
(THE PRINCE)



KRISHNA
(DIVINE STATESMAN)



BUDDHA
(ENLIGHTENED ONE)



KALKI
(MIGHTY WARRIOR)

Sacred Duality

From ज्ञान to शक्ति—Saraswati with her veena and swan and Durga on her lion with the trishul together symbolise wisdom, strength, and divine balance.



4x2ft



7x4ft



6x4ft

THE CONQUERED EGO

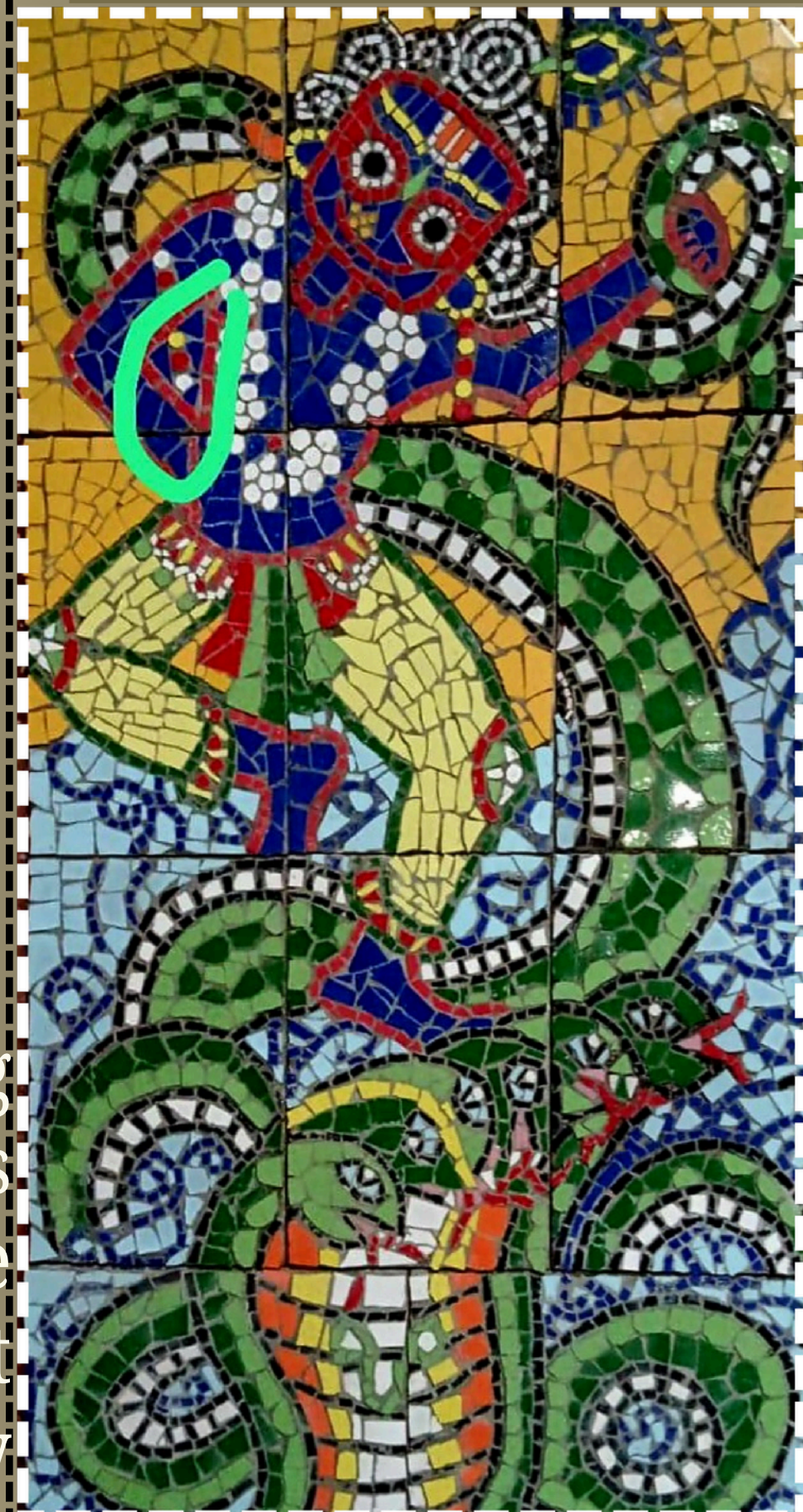
THIS mural depicts a serpent entwined with Lord Krishna, alongside Balram and Subhadra. The serpent symbolizes ego and material world, it contrasts the divine trio's strength, harmony, and higher consciousness expressing transcendence through balance and unity.

KALIYA MARDAN

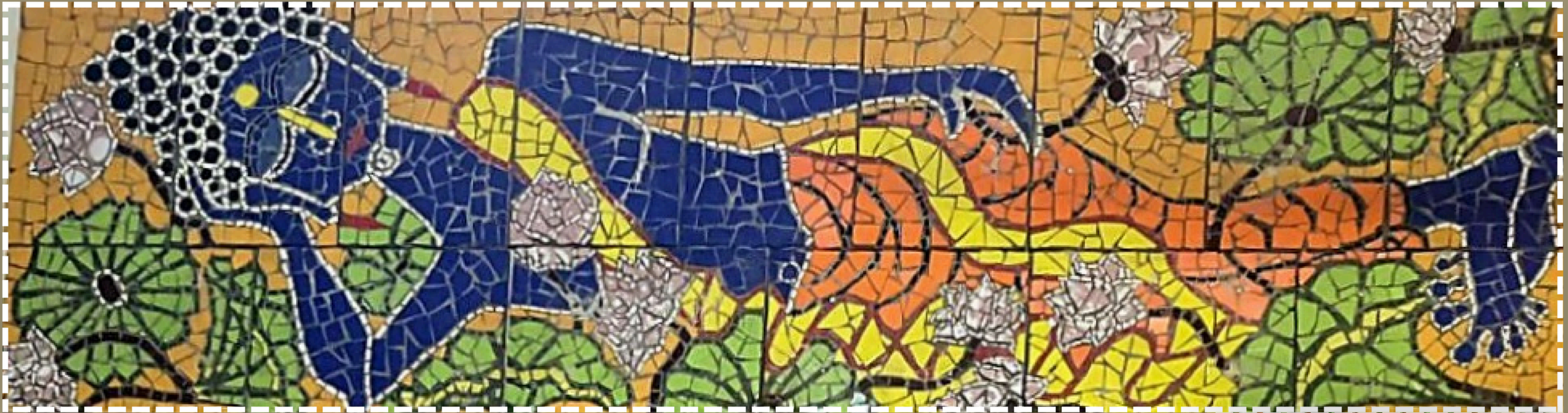
IN the mural, Krishna is seen dancing upon the serpent Kaliya, subduing its venom with effortless grace. The scene captures a powerful moment where chaos gives way to harmony and balance.



5.5 x 2.5ft



5.5 x 3ft



INWARD JOURNEY: THE BUDDHA

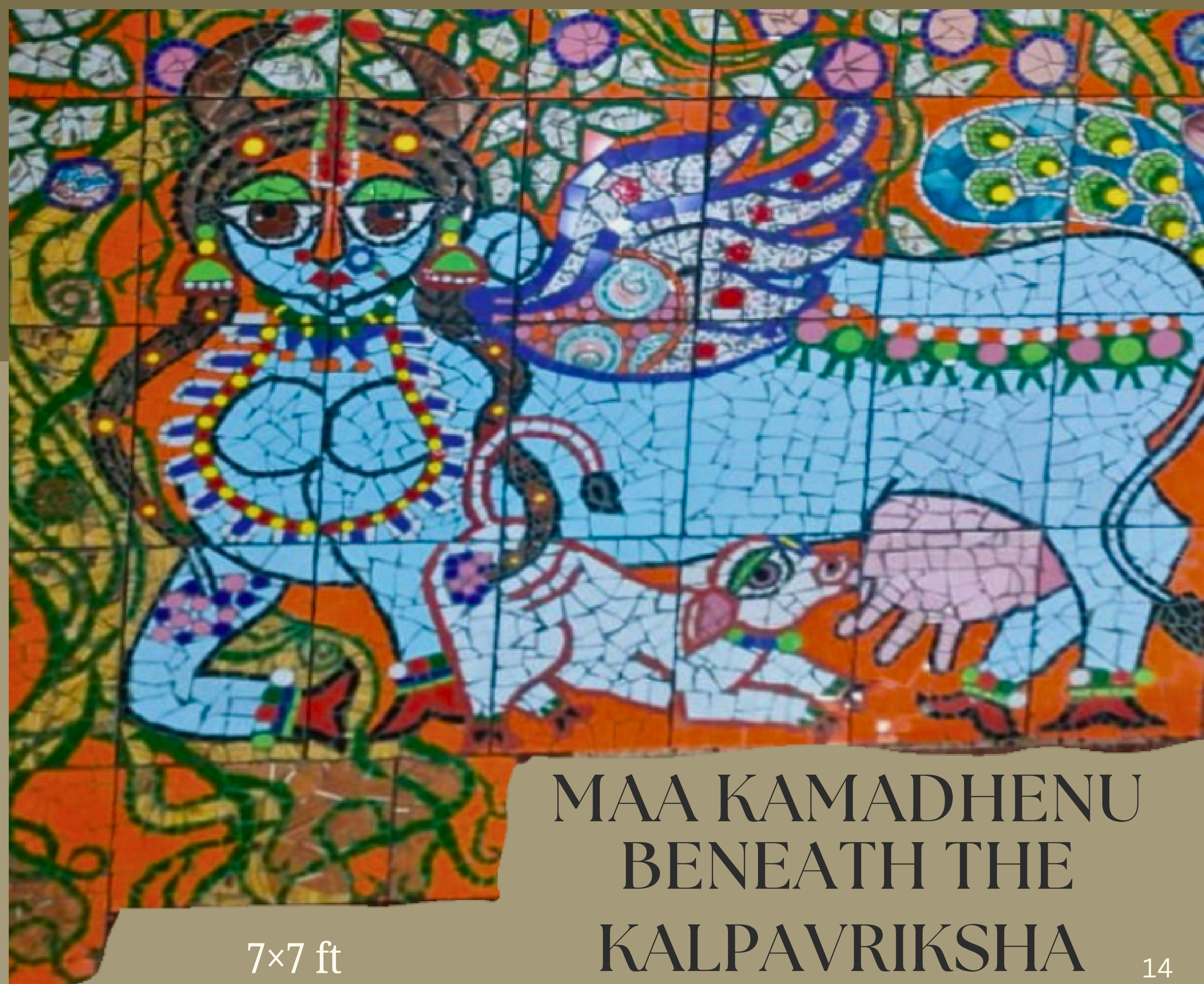
This pair of murals presents the Buddha in two contemplative states-reclining and seated-each embodying a different expression of inner stillness. Rendered in textured mosaic and earthy tones, the compositions evoke a quiet rhythm of rest and awareness. Together, they create a meditative presence, inviting calm, balance, and introspection into the space.

9x2.5 ft & 4.5x3 ft





A mural depicting Kamadhenu with her calf under the sacred Kalpavriksha—Kamadhenu, the eternal source of nourishment and selfless abundance, and Kalpavriksha, the celestial tree of wish fulfillment and prosperity. Together, they embody a timeless expression of divine grace, nurturing energy, and the boundless flow of blessings.



7×7 ft

MAA KAMADHENU
BENEATH THE
KALPAVRIKSHA

SACRED VIGIL

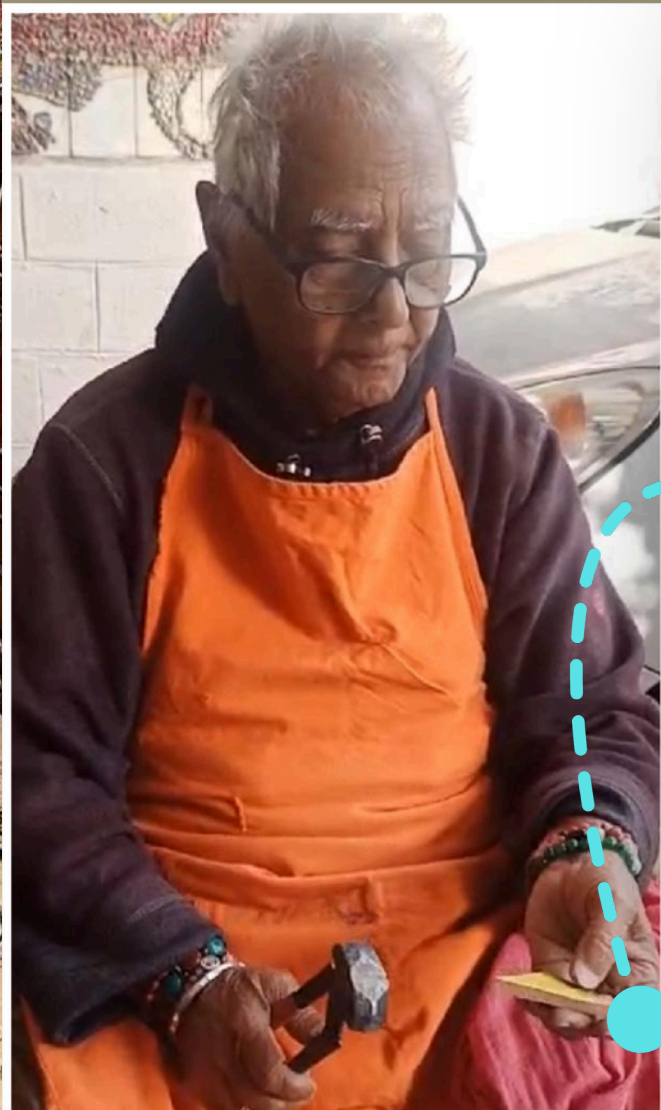
A serene, subtly toned majestic Nandi's commanding stance with pronounced hump, contrasted against a vivid red and orange backdrop—symbolizing steadfast devotion, inner strength, and the dynamic energy of the divine.



6X5ft



A father and daughter weave their distinct artistry into murals, each brought to life through two months of passionate labour.



Pan- India Shipping
Price on request

Thanks for exploring our mural brochure and the stories within



*Note: Colours
may vary
slightly due
to lighting
and camera
settings*

Mob:+91 90988 91818

Insta: @pravinrachanamurals

FB: Pravin Rachana Murals

@: pravinrachana01@gmail.com

